

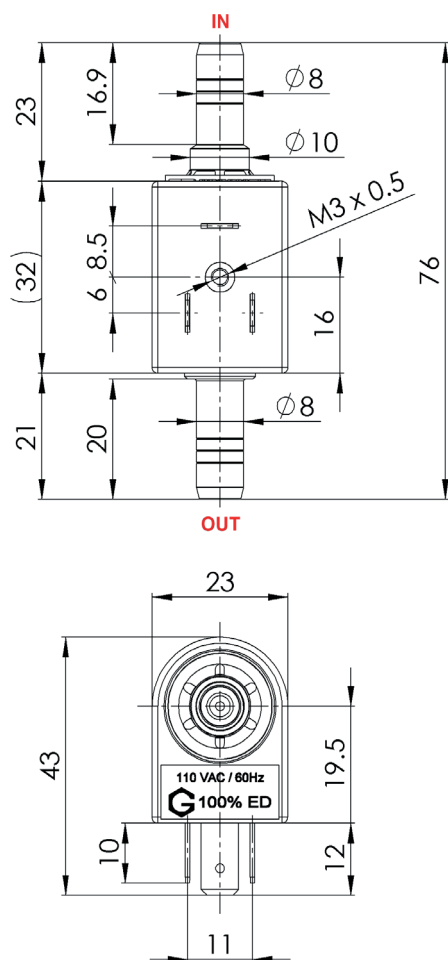
SOLENOID PUMP

EMX08

TECHNICAL DATA



DIMENSIONS



NOMINAL RATED DATA

Pressure (no flow)	$\geq 0.8[\text{bar}]$
Open flow	$\geq 10[\text{l/h}]$
Viscosity range	1...600[mm ² /s]
Filter	Mesh 100
Voltages	230[V] (12, 24, 110V)
Frequencies	50, 60[Hz]
Electrical connection	3 x 2.8 x 0.5 [mm] DIN43650
Power	18[W]
Weight	~95[g]
Temperature	1...50[°C]
Insulation	Class F Class 1
Noise level	Open flow Maximum pressure

35[dB(A)]
29[dB(A)]

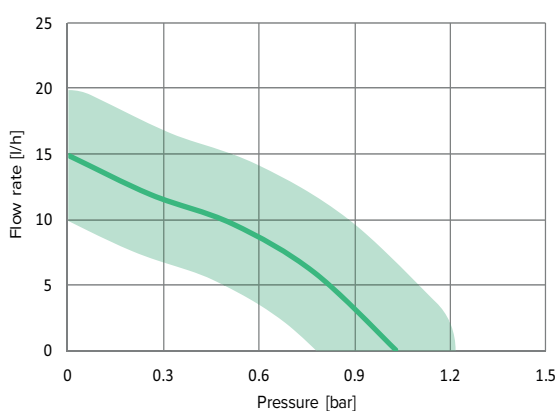
SOLENOID PUMP

EMX08 230V

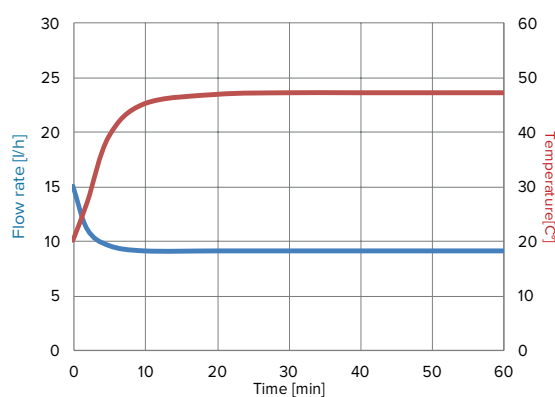
TECHNICAL DATA



PERFORMANCES



OPEN FLOW & TEMPERATURE



Tested with 20°C of water at ambient temperature

ACCESSORIES



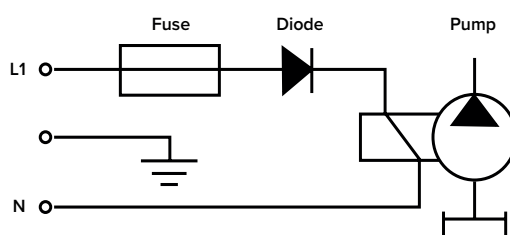
Heating sink



Mounting rubber

Large choice of materials & options

ELECTRIC WIRING DIAGRAM



Please refer to instruction manual for more installation details. For more information, visit our website : www.gotec.ch

Certifications



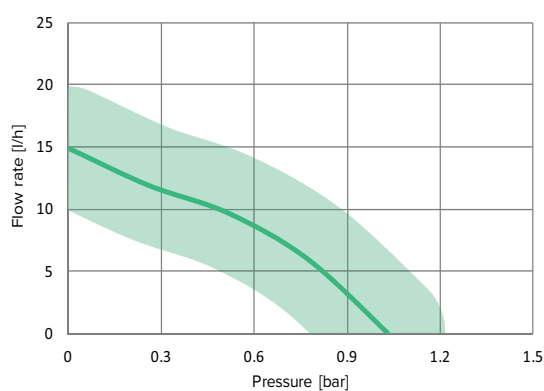
SOLENOID PUMP

EMX08 24VAC

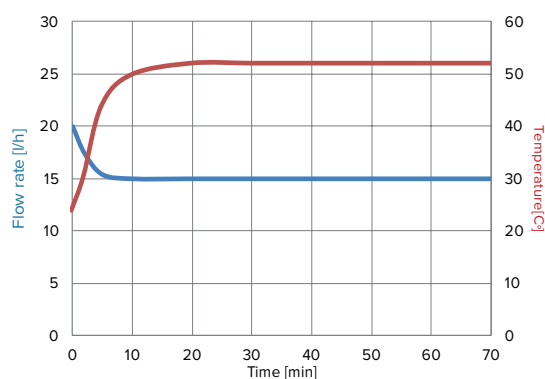
TECHNICAL DATA



PERFORMANCES



OPEN FLOW & TEMPERATURE



Tested with 20°C of water at ambient temperature

ACCESSORIES



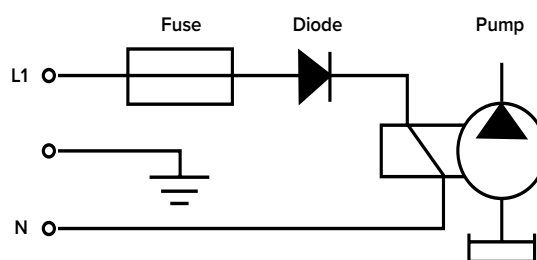
Heating sink



Mounting rubber

Large choice of materials & options

ELECTRIC WIRING DIAGRAM



Please refer to instruction manual for more installation details. For more information, visit our website : www.gotec.ch

Certifications

