

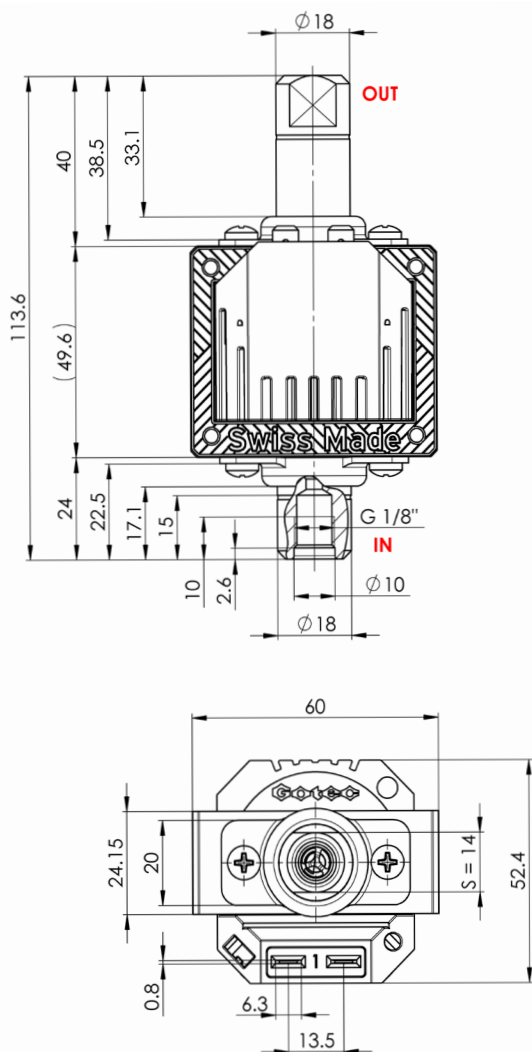
SOLENOID PUMP

ETG150

TECHNICAL DATA



DIMENSIONS



NOMINAL RATED DATA

Pressure (no flow)	≥ 14.5 [bar]
Open flow	≥ 30 [l/h]
Viscosity range	1...600[mm ² /s]
Filter	Mesh 100
Voltages	230[V] (24, 110V)
Frequencies	50, 60[Hz]
Electrical connection	2 x 6.3 x 0.8 [mm]
Power	45[W]
Weight	~560[g]
Temperature	1...50[°C]
Insulation	Class H Class 2
	100% ED / 20 [°C]

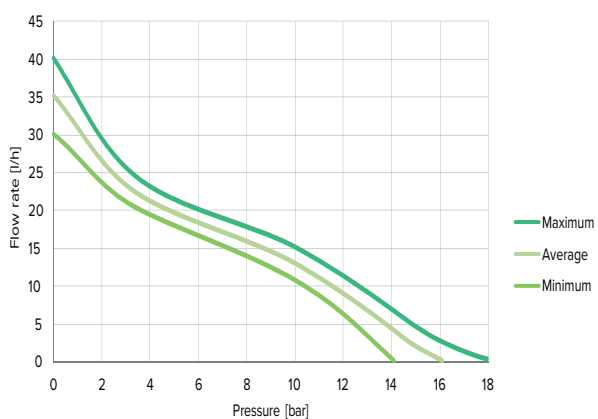
SOLENOID PUMP

ETG150 230V

TECHNICAL DATA

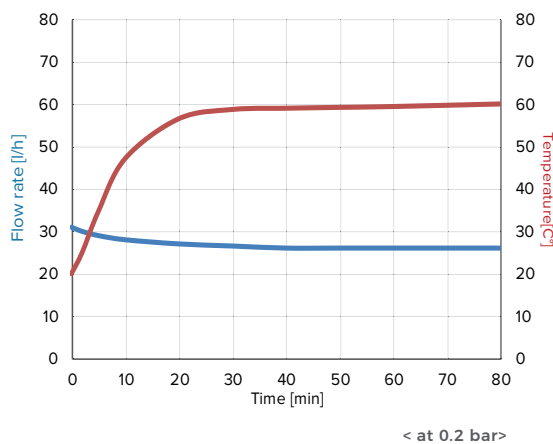


PERFORMANCES



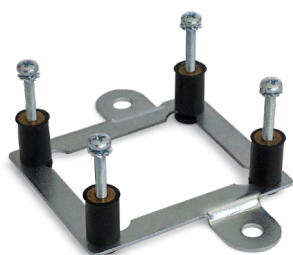
Tested with 20°C of water at ambient temperature

FLOW RATE & TEMPERATURE



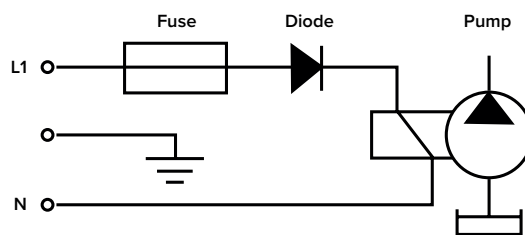
< at 0.2 bar >

ACCESSORIES



Mounting plate

ELECTRIC WIRING DIAGRAM



Large choice of materials & options

Please refer to instruction manual for more installation details. For more information, visit our website : www.gotec.ch

Certifications



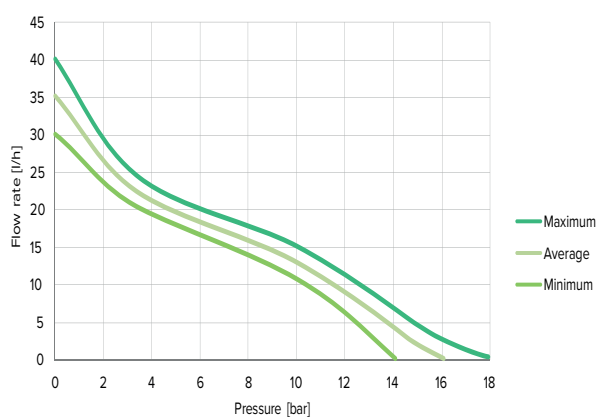
SOLENOID PUMP

ETG150 24VAC

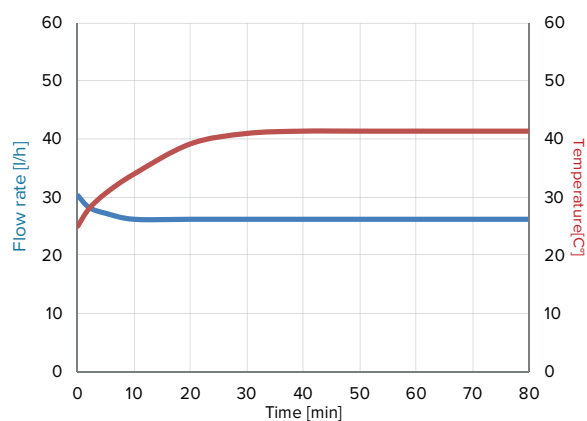
TECHNICAL DATA



PERFORMANCES

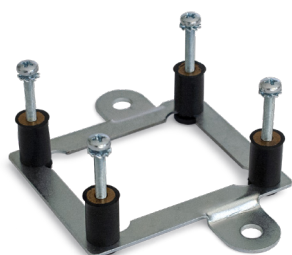


OPEN FLOW & TEMPERATURE



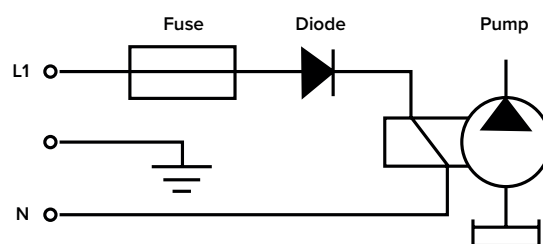
Tested with 20°C of water at ambient temperature

ACCESSORIES



Mounting plate

ELECTRIC WIRING DIAGRAM



Large choice of materials & options

Please refer to instruction manual for more installation details. For more information, visit our website : www.gotec.ch

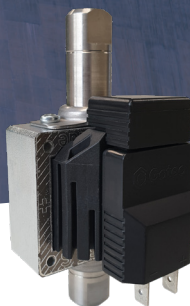
Certifications



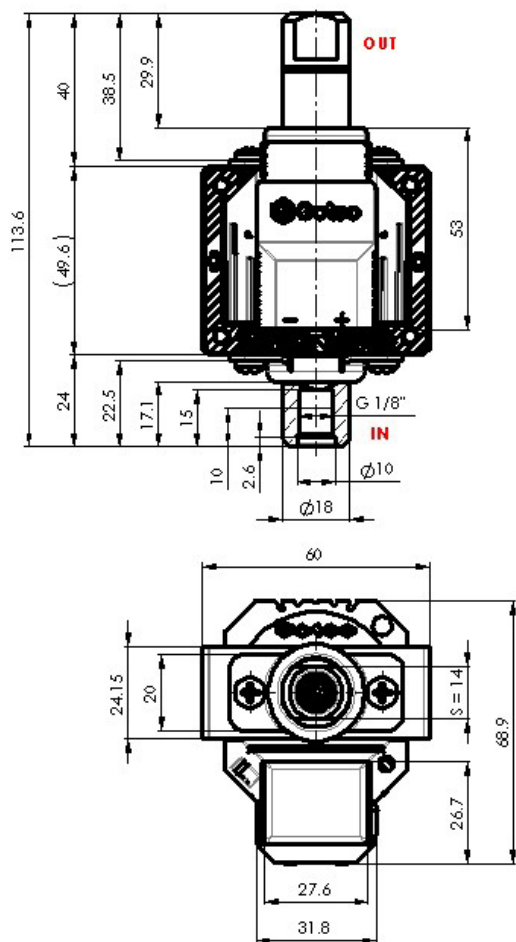
SOLENOID PUMP

ETG150 24VDC

TECHNICAL
DATA



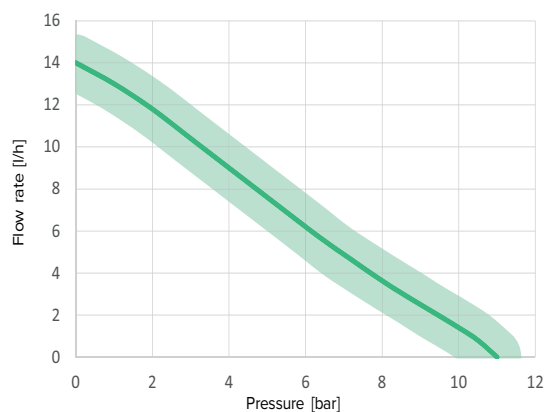
DIMENSIONS



DESCRIPTION

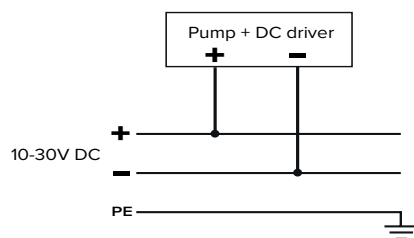
Pump is built with a DC driver to operate with DC voltage. This electronic converts DC voltage into a pulsed signal; the value of frequency and duty cycle are fixed to create the best performances of the pump. The flow can be adjusted via input voltage between 10 to 30 VDC.

PERFORMANCES



Tested with 20°C of water at ambient temperature with 24VDC

ELECTRIC WIRING DIAGRAM



Please refer to instruction manual for more installation details. For more information, visit our website : www.gotec.ch

Certifications

